

TECHNICAL DATA

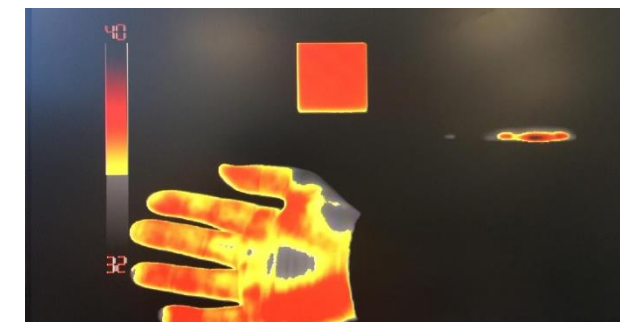
DETECTOR

**Detector:** 3<sup>a</sup> Gen MWIR InSb.  
**Resolution:** 640 x 512 x 15µm  
**FOV:** 20x Optic Zoom  
 • WFOV 36.83° (H) x 29.42° (V)  
 • NFOV 1,83° (H) x 1,47° (V)  
**Focus:** Manual/Automatic/Infinite  
**NETD** <25 mK  
**Video Output:** HD-SDI 1280x720 30 fps  
**Communication:** Ethernet, Serie RS422



DRI Ranges

	DETECTION	RECOGNITION	IDENTIFICATION
OTAN (2.3 x 2.3 m)	19.1 km	6.5 km	4.4 km
PERSON (0.99 m)	10.0 km	2.8 km	1.9 km



FSS MODE

FSS

FEVER SCREENING SYSTEM

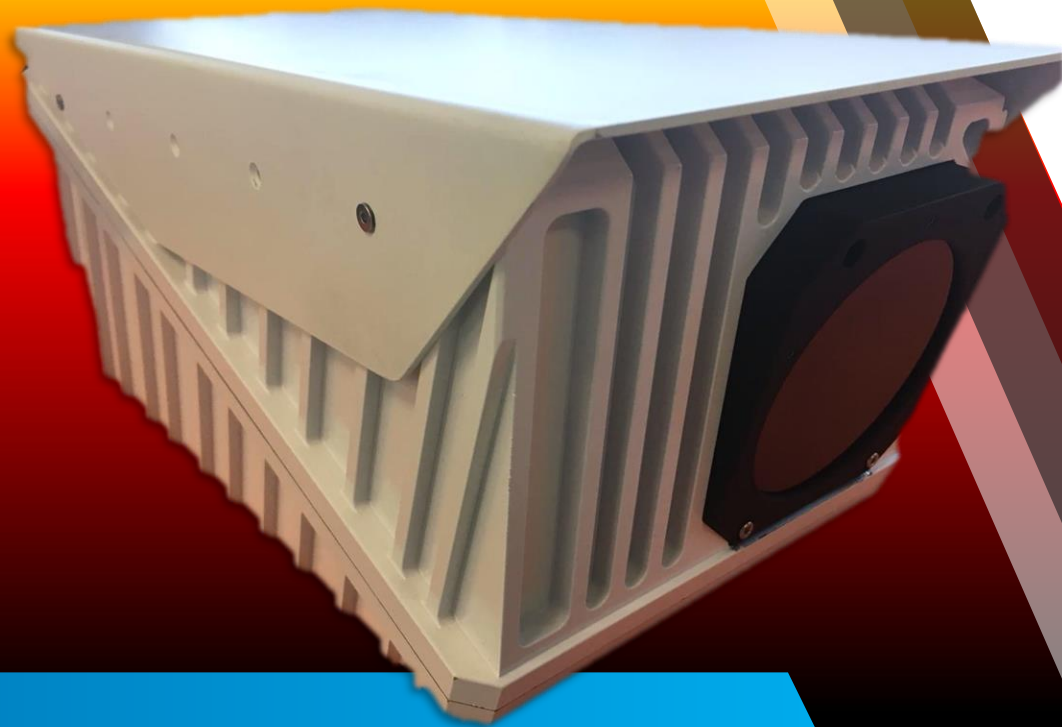
FSS is a mode of functioning, in which the camera goes from working in a relative mode to an absolute mode, assigning colors to the scene objects according to the temperatures identified. The functioning in relative mode is the normal functioning of the thermal cameras, where the differences in temperature are represented but without the data from the degrees of temperature of the individual.

**Nota:** Este sistema ayuda a detectar temperaturas del cuerpo humano que generalmente están asociadas con fiebres, sin embargo, no identificará las primeras etapas de la infección. La parte del cuerpo que presenta una medida de temperatura muy fiable respecto a la temperatura interna que pueda tener el cuerpo humano, es el lagrimal del ojo.

**Distance of detection:** > 20 m  
**Precision:** <0.4°C (NO Black Body, needed)  
**Resolution and Stability:** < 0.1°C  
**Distance of temperature confirmation:** 10 meters



ELECTRO OPTICAL SYSTEM



SPARROW FSS

ELECTRO-OPTICS DIVISION

**SPARROW FSS** (Fever Screening System) is an electro-optical system design for the detection of fever in a person. This system measures the surface temperature identifying with precision to the people that may be going through high fever. This is a useful system to identify those who suffer from systematic fever, Covid-19 (corona virus), Ebola, flu, Norovirus, SARS and other variants of the flu.

This temperature scanner does not affect the person whose being tested, in any way and does not provoke an interruption in the movement, it can be installed in those places where there is high Flow of people, this passive feature allows the SPARROW FSS to be installed in office building entrances, airports, or any transport station (train, metro, bus...). All the individuals in the field of view of the camera can be tested simultaneously and the temperature of each subject can be shown with a high rate of reliability.

Sparrow FSS has been designed as a device to measure temperature of the human body for the ranges from 32°C to 40°C, becoming a measure of protection against viral infections.

ADAPTABILITY

- Rugged System
- Portable
- Fast Deployment
- Easy Installation

FUNCTIONALITY

- Range from 32°C to 40°C
- Black Body Calibration
- High Precision
- High Stability and Resolution

IMAGE

- Pseudo color and Grey Scale
- Configurable Threshold of temperature which is represented by color.